



## Specifications

Models	ZX-135/70	
Measurements	US	Metric
Working height max. <sup>(1)</sup>	141 ft	43.15 m
Platform height max.	135 ft	41.15 m
Below ground reach	19 ft 3 in	5.87 m
Horizontal reach max. - riser extended	59 ft 2 in	18.03 m
Horizontal reach max. - riser retracted	69 ft 9 in	21.26 m
Up and over clearance max. - riser extended	75 ft 6 in	23.01 m
Up and over clearance max. - riser retracted	32 ft 6 in	9.91 m
<b>A</b> Platform length (8 ft/6 ft)	3 ft/2 ft 6 in	0.91 m/0.76 m
<b>B</b> Platform width (8 ft/6 ft)	8 ft/6 ft	2.44 m/1.83 m
<b>C</b> Height - stowed	10 ft 1.5 in	3.09 m
<b>D</b> Length - stowed	42 ft 5 in	12.93 m
<b>E</b> Width (axles retracted)	8 ft 2 in	2.49 m
<b>E</b> Width (axles extended)	12 ft 11 in	3.94 m
<b>F</b> Wheelbase (axles retracted)	13 ft 6 in	4.11 m
<b>F</b> Wheelbase (axles extended)	13 ft 6 in	4.11 m
<b>G</b> Ground clearance - center	1 ft 3 in	0.38 m

## Productivity

Lift capacity max. - unrestricted	600 lb	272 kg
Platform rotation	160°	
Jib length	12/20 ft	3.66/6.10 m
Vertical jib rotation	110°	
Turntable rotation	360°	
Drive speed - stowed <sup>(2)</sup>	3.0 mph	4.8 km/h
Drive speed - raised	0.68 mph	1.1 km/h
Gradeability - stowed <sup>(2)</sup>	45%	
Tilt sensor activation (front to back/side to side)	4.5° / 4.5°	
Turning radius - inside/outside (axle retracted)	26 ft 4 in/32 ft 8 in	8.03 m/9.96 m
Turning radius - inside/outside (axle extended)	9 ft 6 in/20 ft 3 in	2.90 m/6.17 m
Tires (foam-filled)	445 D50/710	

## Power

Power	Diesel	
Auxiliary power unit	12V DC	
Hydraulic tank capacity	65 gal	246.1 L
Fuel tank capacity	40 gal	151 L

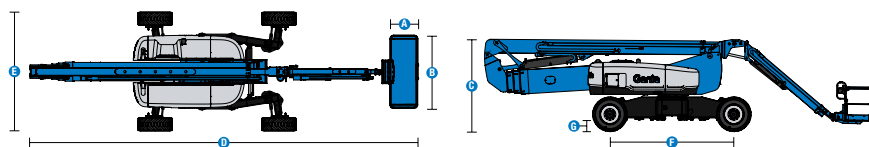
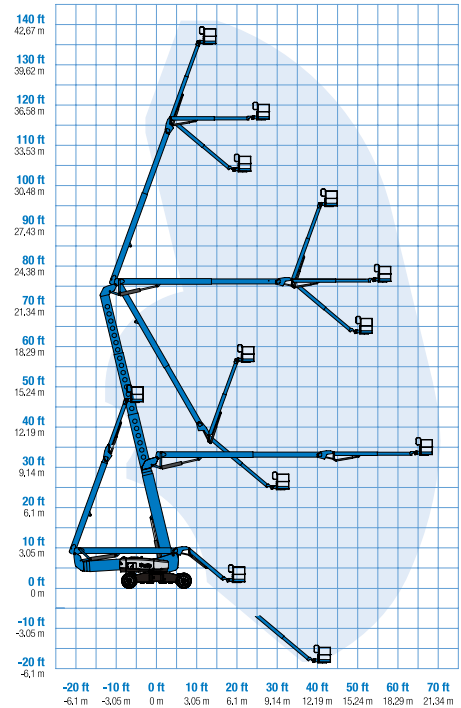
## Weight<sup>(3)</sup> and Floor Loading<sup>(4)</sup>

Weight	46,500 lb	21,092 kg
Tire contact pressure	130 psi	896 kPa
Occupied floor pressure (tires)	209 psf	9.99 kPa

## Sound and Vibration Levels

Sound Pressure level (ground workstation)	85 dBA	
Sound Pressure level (platform workstation)	74 dBA	
Vibrations	8 ft 2 in/s <sup>2</sup>	2.5 m/s <sup>2</sup>

## Range of motion ZX-135/70



Articulated Boom Lifts

## Genie® ZX™ -135/70

SKU: Standard Model CE, UKCA

- ZX135001CI0005: ZX-135/70, Stage IIIA, 220V, 4WD
- ZX135001CV0003: ZX-135/70, 110V, 4WD
- ZX135001CV0004: ZX-135/70, 220V, 4WD

\* Build to Order

SKU: Standard Model

- ZX135001CV0002: ZX-135/70, 110V, 3kW Generator, 4WD
- ZX135001CV0001: ZX-135/70, Stage V, 3kW Generator, 4WD

Option availability	S	S+	BtO
<b>Power</b>			
74 hp, 55 kW, Deutz TD2011, Turbo Diesel, T4i/Stage IIIA			○
74 hp, 55 kW, Deutz TCD2.2L, Turbo Diesel, Stage V	✓	✓	✓
Cold weather package		○	○
Diesel air intake pre-cleaner			○
Diesel catalytic scrubber muffler (T4i/Stage IIIA)			○
Positive air shutdown system			○
Anti-restart engine protection	✓	✓	✓
Auto engine fault shutdown	✓	✓	✓
Auxiliary power unit	✓	✓	✓
Engine gauge display	✓	✓	✓
<b>Platform</b>			
6ft/1.83m dual-entry platform with side swing gate			○
8ft/2.44m tri-entry platform with side swing gate	✓	✓	✓
Power to platform, no RCBO	✓		○
Power to platform with RCBO		○	○
Dual axis joystick steering			○
Thumb rocker steering	✓	✓	✓
Air line to platform			○
Control box covers		○	○
Lift Guard Full Mesh panels			○
Lift Guard Half Mesh panels			○
Light Package: drive and work lights			○
Platform auxiliary top rail			○
3kW AC Generator, 110V/50Hz			○
3kW AC Generator, 220V/50Hz			○
AC Power cord to platform	✓	✓	✓
Drive enable system	✓	✓	✓
Horn	✓	✓	✓
Jib Extend 12-20ft/3.66-6.10m	✓	✓	✓
Lift Guard Contact Alarm	✓	✓	✓
Lift Tools Work Tray	✓	✓	✓
Platform load sense system	✓	✓	○
Proportional controls	✓	✓	✓
Self-leveling platform	✓	✓	✓
Telescoping riser for up and over	✓	✓	✓
Travel alarm package: flashing beacons, descent, travel and tilt alarms	✓	✓	✓
<b>Chassis</b>			
Lift Connect Telematics	✓	✓	✓
Lift Connect with Access Manager upgrade		○	○
Eco32 biodegradable hydraulic oil		○	○
Rough terrain, foam-filled tires	✓	✓	✓
Chassis tilt lift function cut-out		○	○
Deluxe hostile environment kit			○
Hostile environment kit			○
2 speed wheel motors	✓	✓	✓
4 wheel high angle steer	✓	✓	✓
Chassis tilt drive function cut-out	✓	✓	✓
Hour meter	✓	✓	✓
Hydraulic oil cooler	✓	✓	✓
Mini XChassis extendable axles	✓	✓	✓

- S Standard
- S+ Standard +
- BtO Build to Order
- ✓ Standard Features
- Options



20ft/6.10m Jib-Extend



Mini XChassis



>75ft/23m Up and Over



Positive air shutdown Stage V engines only  
Engine gauge package standard on Stage IIIA engine