

# Genie® Z®-60 DC & Z-60 FE

**Specifications** ANSI A92.20, CSA B354.6

Models	Z-60 DC & Z-60 FE	
Measurements	US	Metric
Working height max. <sup>(1)</sup>	65 ft 7 in	20.16 m
Platform height max.	59 ft 7 in	18.16 m
Horizontal reach max.	36 ft 7 in	11.15 m
Below ground reach	8 ft 1 in	2.46 m
Up and over clearance max.	24 ft 3 in	7.39 m
<b>A</b> Platform length (8 ft/6 ft)	3 ft/2 ft 6 in	0.91 m/0.76 m
<b>B</b> Platform width (8 ft/6 ft)	8 ft/6 ft	2.44 m/1.83 m
<b>C</b> Height - stowed	8 ft 4 in	2.54 m
<b>D</b> Length - stowed	26 ft 9 in	8.15 m
<b>E</b> Width	8 ft 2 in	2.49 m
<b>F</b> Wheelbase	8 ft 2 in	2.49 m
<b>G</b> Ground clearance - center	1 ft 1 in	0.33 m

### Productivity

Lift capacity max. - unrestricted	500 lb	227 kg
Platform rotation	160°	
Jib length	5 ft	1.52 m
Vertical jib rotation	135°	
Turntable rotation	355°	
Drive speed - stowed <sup>(2)</sup>	4.0 mph	6.44 km/h
Drive speed - raised	0.68 mph	1.1 km/h
Gradeability - stowed <sup>(2)</sup>	45%	
Tilt sensor activation (front to back/side to side)	2.5° / 4.5°	
Turning radius - inside/outside	8 ft 3 in/18 ft 8 in	2.51 m/5.69 m
Tires	355/55 D625	

### Power

Drive system	34V 3-Phase AC
Battery Pack, DC	48V DC (8×6V), 390Ah, FLA
Battery Pack, FE	48V DC (8×6V), 415Ah, AGM 48V DC (8×6V), 415Ah, AGM
AC generator, FE	Diesel
Auxiliary power unit	12V DC
Hydraulic tank capacity	18 gal 68.14 L
Fuel tank capacity	17 gal 64 L

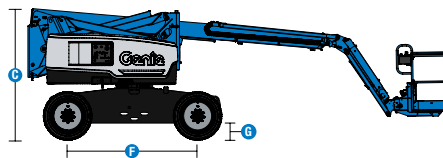
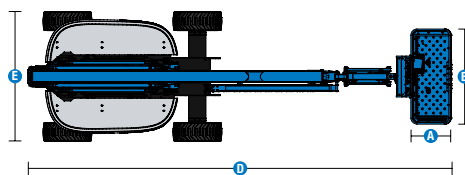
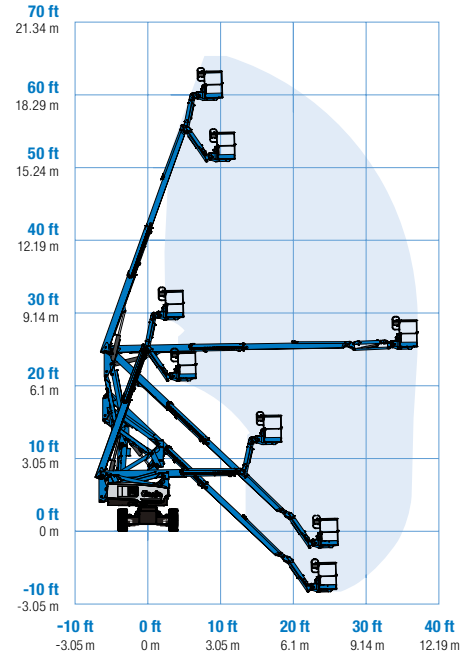
### Weight<sup>(3)</sup> and Floor Loading<sup>(4)</sup>

Weight, DC	16,600 lb	7,530 kg
Weight, FE	17,100 lb	7,756 kg
Tire contact pressure	70 psi	483 kPa
Occupied floor pressure (tires)	180 psf	8.62 kPa

### Sound and Vibration Levels

Sound Pressure level (ground workstation)	< 70 dBA (DC)/87 dBA (FE)
Sound Pressure level (platform workstation)	< 70 dBA (DC)/76 dBA (FE)
Vibrations	1.81 ft/s <sup>2</sup> 0.55 m/s <sup>2</sup>

### Range of motion Z-60 DC & FE



# Genie® Z®-60 DC & Z-60 FE



**SKU: Standard Model** ANSI A92.20, CSA B354.6

- Z-60 DC, DC Power, 4WD\*
- **Z60FE001AE0002:** Z-60 FE Hybrid, 4WD

\* Build to Order

Option availability		S	S+	BtO
Power	24.8 hp, 18.5kW, Kubota D1105, Diesel, T4i/T4f, Stage IIIA/IV, CN III (FE model only)	✓	✓	✓
	FLA flooded lead acid batteries (DC model only)		✓	✓
	AGM Maintenance-free batteries (Optional on DC)	✓	✓	✓
	Cold weather package			○
	Power inverter, 2kW, 120V/60Hz		○	○
	Low voltage interrupt (LVI) with battery charge indicator (BCI)	✓	✓	✓
Platform	6ft/1.83m dual-entry platform with side swing gate	✓	✓	✓
	8ft/2.44m dual-entry platform with side swing gate	✓	✓	✓
	Dual axis joystick steering	✓	✓	✓
	Thumb rocker steering			○
	Air line to platform			○
	Control box covers		○	○
	Lift Guard Full Mesh panels			○
	Lift Guard Half Mesh panels			○
	Light Package: drive and work lights		○	○
	Platform auxiliary top rail			○
	5ft/1.52m Jib	✓	✓	✓
	AC Power cord to platform	✓	✓	✓
	Alarm package: flashing beacons, descent, travel and tilt alarms	✓	✓	✓
	Drive enable system	✓	✓	✓
	Horn	✓	✓	✓
	LCD display	✓	✓	✓
	Lift Guard Contact Alarm	✓	✓	✓
	Lift Tools Work Tray	✓	✓	✓
	Platform load sense system	✓	✓	✓
	Proportional controls	✓	✓	✓
Self-leveling platform	✓	✓	✓	
Chassis	Lift Connect Telematics		○	○
	Telematics-ready	✓	✓	✓
	Lift Connect with Access Manager upgrade		○	○
	Biodegradable hydraulic oil			○
	Cold weather hydraulic oil			○
	Fire resistant hydraulic oil			○
	Rough terrain, foam-filled, non-marking tires	✓	✓	✓
	Rough terrain, foam-filled tires		○	○
	Hostile environment kit			○
	Tow package			○
	Active oscillating axle	✓	✓	✓
	Chassis tilt drive function cut-out	✓	✓	✓
	Chassis tilt lift function cut-out	✓	✓	✓
	Dual parallelogram lift linkage	✓	✓	✓
	Electric brake release	✓	✓	✓
	Hour meter	✓	✓	✓
On-board diagnostic system	✓	✓	✓	
Sealed AC electric drive motors	✓	✓	✓	

- S Standard
- S+ Standard +
- BtO Build to Order
- ✓ Standard Features
- Options



Indoor & Outdoor Boom



Rugged Terrainability



Low Noise, Low Emissions



# CHERRY PICKER-IE



Sales & Service



Bespoke Design



MEWP Training



Handling Solutions

