



Optimal agility in confined working areas

- Progressive electric drive AC motors
- Zero tail swing & tight turning radius
- 3m outreach vertical jib

Minimal maintenance & downtime

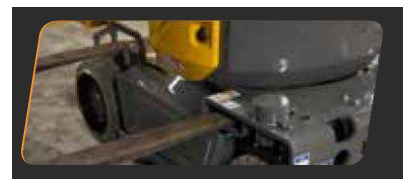
- Maintenance free brushless AC motors
- On-board diagnostic tool
- Centralized battery filling

Longer life time

- New unbreakable hoods in composite material
- Durability multiplied by 3 on pins, bushes, non-painted parts and fastening hardware

Smart transportability

- Versatile and effective transport solutions with forklift tine pockets
- 25% gradeability to easily climb truck ramps





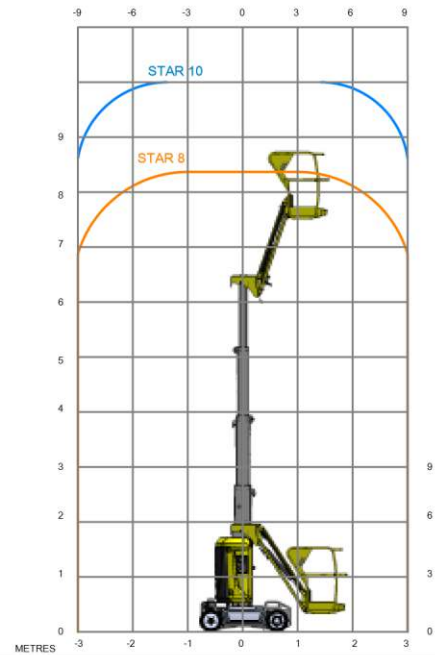
STAR 8 / STAR 10

VERTICAL MASTS



TECHNICAL DATA

| | STAR 8 | STAR 10 |
|--------------------------------|------------------|------------------|
| Working height | 8.7 m | 10 m |
| Platform height | 6.7 m | 8 m |
| Horizontal outreach | 3 m | 3 m |
| Lift capacity | 200 kg | 200 kg |
| Platform size | 0.78 x 0,98 m | 0.78 x 0,98 m |
| D Length | 2.7 m | 2.7 m |
| B Width | 1 m | 1 m |
| A Height - stowed | 1.99 m | 1.99 m |
| Tailswing | 0 cm | 0 cm |
| C Wheelbase | 1.2 m | 1.2 m |
| E Ground clearance | 10 cm | 10 cm |
| Driveable at full height up to | 6.7 m | 8 m |
| Drive speed proportional | 0.6 - 5 km/h | 0.6 - 5 km/h |
| Turning radius - outside | 1.88 m | 1.88 m |
| Turntable rotation | 345° | 345° |
| Vertical jib rotation | 130° (+70°/-60°) | 130° (+70°/-60°) |
| Tires - non marking | 16x5x10.5 | 16x5x10.5 |
| Tilt alarm | 3 ° | 3 ° |
| Gradeability | 25 % | 25 % |
| Hydraulic system capacity | 7 l | 7 l |
| Power source | 24 V - 250 Ah | 24 V - 250 Ah |
| Weight | 2 585 kg | 2 677 kg |



STANDARD EQUIPMENT

- 24 V electric drive brushless AC motors
 - 24 V – 250 Ah traction batteries
 - 35 A battery charger
 - Battery charge indicator
 - On-board diagnostic tool Haulotte Activ'Screen
 - Centralised battery filling
 - Forklift tine pockets
 - Towing hooks and lifting eyes
 - Passive potholes
 - 2 rear steering wheels
-
- Non-marking tires
 - Brake release
 - Hourmeter
 - Horn
 - Emergency stop buttons at cage and ground level
 - Load controller in the platform
 - Emergency hand pump
 - 2 control stations at cage and ground level
 - 2 rings in the platform for safety harnesses
 - Travel alarm

OPTIONS AND ACCESSORIES

- Maintenance-free batteries
- Swing door entry gate
- Haulotte ACTIV'SHIELD™ Bar
- Flashing light
- Working light
- Power line in platform
- Air line in platform
- Hydraulic oil for cold countries
- Biodegradable oil

