



# Self-Propelled Articulating Booms

## Z™-34/22 IC

### Specifications

Models	Z-34/22 IC 2WD		Z-34/22 IC 4WD	
Measurements	US	Metric	US	Metric
Working height maximum*	40 ft 6 in	12.52 m	40 ft 7 in	12.54 m
Platform height maximum	34 ft 6 in	10.52 m	34 ft 7 in	10.54 m
Horizontal reach maximum	22 ft 3 in	6.78 m	22 ft 3 in	6.78 m
Up and over clearance maximum	15 ft	4.57 m	15 ft 1 in	4.6 m
A Platform length	2 ft 6 in	0.76 m	2 ft 6 in	0.76 m
B Platform width	4 ft 8 in	1.42 m	4 ft 8 in	1.42 m
C Height - stowed	6 ft 7 in	2.00 m	6 ft 9 in	2.06 m
D Length - stowed	18 ft 6 in	5.64 m	18 ft 7 in	5.66 m
E Storage height	7 ft 5 in	2.26 m	7 ft 6 in	2.29 m
F Storage length	13 ft 5 in	4.08 m	13 ft 6 in	4.11 m
G Width	5 ft 8 in	1.73 m	6 ft 1 in	1.85 m
H Wheelbase	6 ft 2 in	1.88 m	6 ft 2 in	1.88 m
I Ground clearance - center	6 in	0.15 m	6.5 in	0.17 m

### Productivity

Lift capacity	500 lbs	227 kg	500 lbs	227 kg
Platform rotation	180°		180°	
Vertical jib rotation	139°		139°	
Turntable rotation	355° non-continuous		355° non-continuous	
Turntable tailswing	zero		zero	
Drive speed - stowed	3.0 mph	4.8 km/h	3.0 mph	4.8 km/h
Drive speed - raised**	0.68 mph	1.1 km/h	0.68 mph	1.1 km/h
Gradeability - stowed***	37%		45%	
Turning radius - inside	5 ft 9 in	1.75 m	5 ft 11 in	1.80 m
Turning radius - outside	13 ft 1 in	4 m	13 ft 6 in	4.11 m
Controls	12V DC proportional / 2 speed		12V DC proportional / 2 speed	
Tires - air-filled	9 x 14.5 in		10 x 16.5 in	
			rough terrain	

### Power

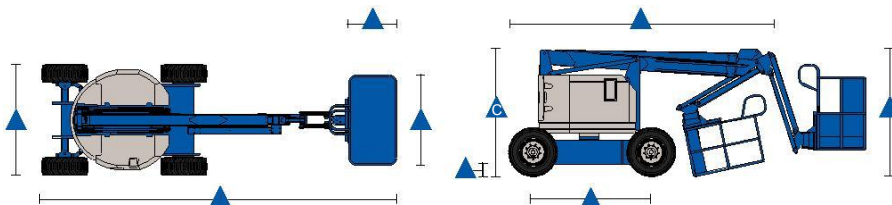
Power source	Kubota DF-972 3-cylinder gas/LPG 31 hp (23.1 kW) T4f Kubota D-1105 3-cylinder diesel, 26 hp (19.4 kW) T4f Perkins 403F-11 3-cylinder diesel, 24.6 hp (18.3k W)			
Auxiliary power unit	12V DC		12V DC	
Hydraulic tank capacity	19 gal	71.9 L	19 gal	71.9 L
Fuel tank capacity	9.0 gal	35.2 L	9.3 gal	35.2 L

### Weight\*\*\*\*

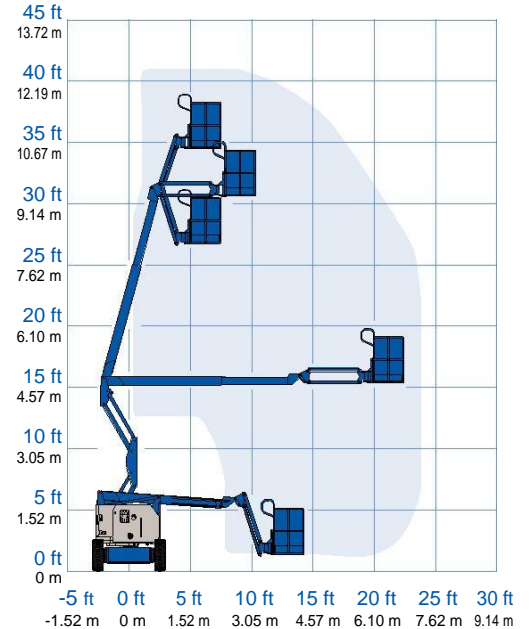
	10,150 lbs	4,604 kg	10,450 lbs	4,740 kg
--	------------	----------	------------	----------

### Standards Compliance

ANSI A92.5, CSA B354.4, EN 280, AS 1418.10



### Range Of Motion Z-34/22 IC



\*The metric equivalent of working height adds 2 m to platform height. U.S. adds 6 ft to platform height.  
 \*\*In lift mode (platform raised), the machine is designed to operate on firm, level surfaces only.  
 \*\*\*Gradeability applies to driving on slopes. See operator's manual for details regarding slope ratings.  
 \*\*\*\*Weight will vary depending on options and/or country standards.



# Self-Propelled Articulating Booms

## Z™-34/22 IC

### Features

Standard Features	Easily Configured To Meet Your Needs	Options & Accessories
-------------------	--------------------------------------	-----------------------

#### Measurements

##### Z-34/22 IC 2WD

- 40 ft 6 in (12.52 m) working height
- 22 ft 3 in (6.78 m) horizontal reach
- 14 ft 11 in (4.54 m) up and over clearance
- Up to 500 lbs (227 kg) lift capacity

##### Z-34/22 IC 4WD

- 40 ft 7 in (12.37 m) working height
- 22 ft 3 in (6.78 m) horizontal reach
- 15 ft (4.57 m) up and over clearance
- Up to 500 lbs (227 kg) lift capacity

#### Productivity

- 4 ft (1.22 m) jib with 139° working range
- Self-leveling platform
- Hydraulic platform rotation
- Proportional joystick controls
- Drive enable
- AC power cord to platform
- Horn
- Hour meter
- Tilt alarm
- Descent alarm
- Zero tailswing and front arm swing
- 355° non-continuous turntable rotation
- Locking turntable covers
- Two speed wheel motors
- Telematics ready connector

#### Power

- 12 V DC auxiliary power

#### Platform Options

- Steel 4 ft 8 in (1.42 m) (standard)
- Steel 3 ft 10 in (1.17 m)

#### Jib

- 4 ft (1.22 m) jib boom

#### Engine Options

- 40hp PSI (GM) .998L gas/LPG
- 26 hp (19.4 kW) Kubota, T4f diesel
- 24.6 (18.3kW) Perkins, T4f diesel

#### Drive Options

- 2WD
- 4WD

#### Tire Options

- Industrial air-filled\*
- Rough terrain air-filled
- Industrial foam-filled\*
- Industrial non-marking air or foam-filled\*
- Rough terrain foam-filled
- Sealant treated air-filled

#### Productivity Options

- Platform swing gate
- Half-mesh platform inserts with swing gate
- Platform top auxiliary rail
- Air line to platform
- Biodegradable hydraulic oil
- Fire resistant hydraulic oil
- Aircraft protection package\*\*
- Hostile environment kit
- Alarm package
- Light package
- Lockable platform control box cover
- Operator Protective Alarm

#### Power Options

- Engine gauge package
- AC Generator Packages (110 V / 60 Hz - 220 V / 50 Hz, 2000 W)
- Cold Weather Package
- LPG tank 33.5 lbs (15.19 kg) capacity



\* 2WD only  
\*\* Reduces platform weight capacity to 440 lbs

Distributed By



cherrypicker.ie

sales@cherrypicker.ie



353 (1) 835 4788



353 87 255 7755