

## Self-Propelled Telescopic Booms

### S -40 & S™ -45

### Specifications

| Models                                | S-40       |         | S-45        |         |
|---------------------------------------|------------|---------|-------------|---------|
| Measurements                          | US         | Metric  | US          | Metric  |
| Working height maximum*               | 46 ft      | 14.19 m | 51 ft       | 15.72 m |
| Platform height maximum               | 40 ft      | 12.19 m | 45 ft       | 13.72 m |
| Horizontal reach maximum              | 31 ft 8 in | 9.67 m  | 36 ft 8 in  | 11.12 m |
| Below ground reach                    | 3 ft 2 in  | 0.97 m  | 4 ft 11 in  | 1.5 m   |
| <b>A</b> Platform length - 8 ft model | 3 ft       | 0.91 m  | 3 ft        | 0.91 m  |
| Platform length - 6 ft model          | 2 ft 6 in  | 0.76 m  | 2 ft 6 in   | 0.76 m  |
| <b>B</b> Platform width - 8 ft model  | 8 ft       | 2.44 m  | 8 ft        | 2.44 m  |
| Platform width - 6 ft model           | 6 ft       | 1.83 m  | 6 ft        | 1.83 m  |
| <b>C</b> Height - stowed              | 8 ft 2 in  | 2.49 m  | 8 ft 2 in   | 2.49 m  |
| - stowed with Trax option             | 8 ft 2 in  | 2.49 m  | 8 ft 2 in   | 2.49 m  |
| <b>D</b> Length - stowed              | 24 ft 3 in | 7.39 m  | 27 ft 10 in | 8.48 m  |
| - transport (jib tucked under)        |            |         | 22 ft 4 in  | 6.80 m  |
| <b>E</b> Width - standard tires       | 7 ft 6 in  | 2.30 m  | 7 ft 6 in   | 2.30 m  |
| - Trax option                         | 7 ft 7 in  | 2.31 m  | 7 ft 7 in   | 2.31 m  |
| <b>F</b> Wheelbase                    | 7 ft 3 in  | 2.20 m  | 7 ft 3 in   | 2.20 m  |
| <b>G</b> Ground clearance - center    | 1 ft .5 in | 0.32 m  | 1 ft .5 in  | 0.32 m  |

### Productivity

|                               |                                     |          |                      |          |
|-------------------------------|-------------------------------------|----------|----------------------|----------|
| Lift capacity                 | 500 lbs                             | 227 kg   | 500 lbs              | 227 kg   |
| Platform rotation             | 160°                                |          | 160°                 |          |
| Vertical jib rotation         |                                     |          | 135°                 |          |
| Turntable rotation            | 360° continuous                     |          | 360° continuous      |          |
| Turntable tailswing           | 2 ft 10 in                          | 0.86 m   | 2 ft 10 in           | 0.86 m   |
| Drive speed - stowed          | 4.8 mph                             | 7.7 km/h | 4.8 mph              | 7.7 km/h |
| - raised or extended          | 0.68 mph                            | 1.1 km/h | 0.68 mph             | 1.1 km/h |
| - Trax option stowed          | 2.5 mph                             | 4.0 km/h | 2.5 mph              | 4.0 km/h |
| - Trax option raised          | 0.68 mph                            | 1.1 km/h | 0.68 mph             | 1.1 km/h |
| Gradeability - 2WD - stowed** | 30%                                 |          | 30%                  |          |
| - 4WD - stowed**              | 40%                                 |          | 40%                  |          |
| Turning radius - inside       | 6 ft 8 in                           | 2.0 m    | 6 ft 8 in            | 2.0 m    |
| - outside                     | 15 ft 8 in                          | 4.78 m   | 15 ft 8 in           | 4.78 m   |
| - Trax option inside          | 7 ft 9 in                           | 2.36 m   | 7 ft 9 in            | 2.36 m   |
| - Trax option outside         | 17 ft                               | 5.18 m   | 17 ft                | 5.18 m   |
| Controls                      | 12 V DC proportional                |          | 12 V DC proportional |          |
| Tires - RT lug                | 12.5L-16SL front / 12-16.5 NHS rear |          |                      |          |
|                               | Trax                                |          | Trax                 |          |

### Power

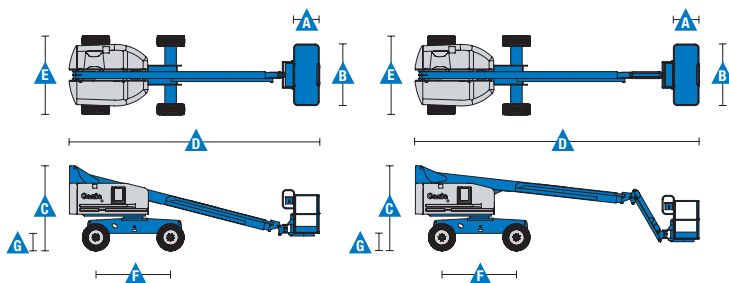
|                         |   |       |         |       |
|-------------------------|---|-------|---------|-------|
| Power source            | 49 hp (36.54 kW) Deutz diesel T4f D2.9L4    |       |         |       |
|                         | 49 hp (36.54 kW) Perkins diesel T4f 404D-22 |       |         |       |
|                         | 60hp (44.74kW) Ford gas/LPG MSG425          |       |         |       |
| Auxiliary power unit    | 12 V DC                                     |       | 12 V DC |       |
| Hydraulic tank capacity | 45 gal                                      | 170 L | 45 gal  | 170 L |
| Fuel tank capacity      | 20 gal                                      | 76 L  | 20 gal  | 76 L  |

### Weight\*\*\*

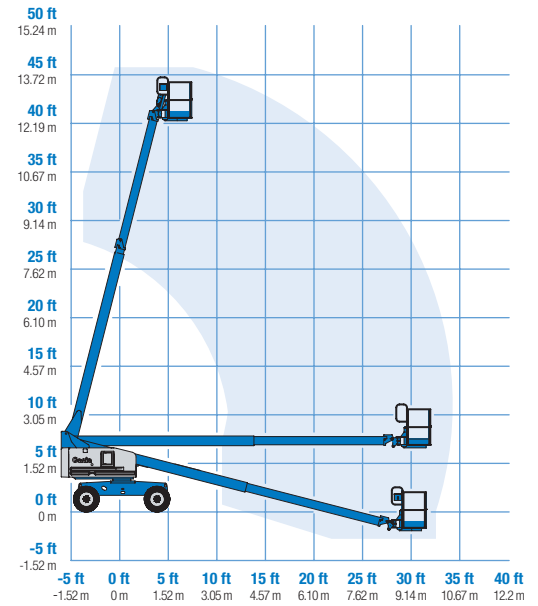
|          |            |          |            |          |
|----------|------------|----------|------------|----------|
| Standard | 12,310 lbs | 5,584 kg | 15,270 lbs | 6,926 kg |
| Trax     | 13,680 lbs | 6,205 kg | 16,670 lbs | 7,561 kg |

### Standards Compliance

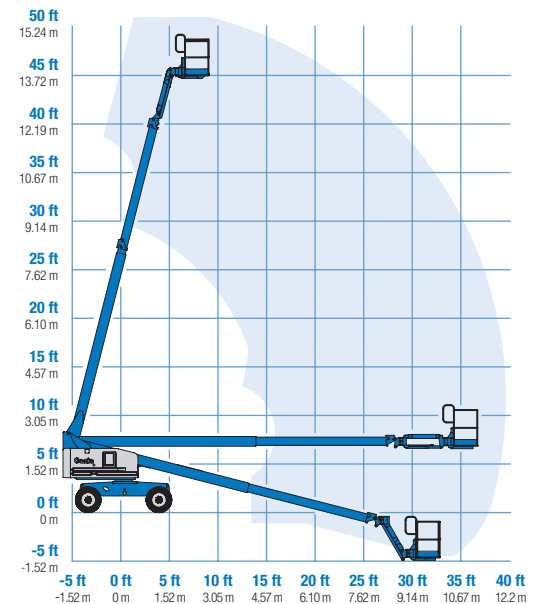
ANSI A92.5, CSA B354.4, EN 280, AS 1418.10



### Range Of Motion S-40



### Range Of Motion S-45



\* The metric equivalent of working height adds 2 m to platform height. U.S. adds 6 ft to platform height.

\*\* Gradeability applies to driving on slopes. See operator's manual for details regarding slope ratings.

\*\*\* Weight will vary depending on options and/or country standards.

### Features

#### Standard Features

##### Measurements

###### S-40

- 46 ft (14.19 m) working height
- 31 ft 8 in (9.65 m) horizontal reach
- 500 lbs (227 kg) lift capacity

###### S-45

- 51 ft (15.72 m) working height
- 36 ft 8 in (11.18 m) horizontal reach
- 500 lbs (227 kg) lift capacity

##### Productivity

- Self-leveling platform
- 160° hydraulic platform rotation
- Proportional joystick controls
- Fuel select switch on platform and ground control panels (Gas/LPG models)\*
- Drive enable
- AC power cord to platform
- Horn
- Hour meter
- Tilt alarm
- Descent alarm
- 360° continuous turntable rotation
- Locking turntable covers
- Positive traction drive
- Two speed wheel motors
- Telematics ready connector
- Entry Toeboard
- Lift Guard™ Contact Alarm

##### Power

- 12 V DC auxiliary power
- Anti-restart engine protection
- Auto engine fault shutdown
- Intake air heater (Deutz engine)

#### Easily Configured To Meet Your Needs

##### Platform Options

- Steel 8 ft (2.44 m) tri entry with side swing gate (standard)
- Steel 6 ft (1.83 m) dual entry with side swing gate

##### Jib Options

- Non-jib (S-40 only)
- 5 ft (1.52 m) jib boom (S-45 only)

##### Engine Options

- 49 hp (36.54 kW) Deutz diesel T4f\*\* (standard)
- 49 hp (36.54 kW) Perkins diesel T4f\*\*
- 60hp (44.74kW) Ford Gas/LPG

##### Drive Options

- 2WD
- 4WD (standard)

##### Axle Options

- Active oscillation (4WD)
- Non-oscillating (2WD)

##### Tire Options

- Rough terrain air-filled (standard)
- Rough terrain foam-filled
- Rough terrain non-marking (air or foam-filled)
- High flotation air-filled
- Sealant treated air-filled
- Trax (track system)

#### Options & Accessories

##### Productivity Options

- Half-mesh platform inserts
- Platform top auxiliary rail
- Welder Ready package
- Air line to platform
- Hydraulic oil cooler
- Specialty hydraulic oil (cold weather, fire resistant, or biodegradable)
- Hostile environment kit
- Deluxe hostile environment kit
- Aircraft protection package (6 ft platform only)
- Thumb rocker steer
- Alarm package
- Panel cradle package
- Lockable platform control box covers
- Tow package
- Work light package
- Operator Protective Structure\*\*\*
- Fall Arrest Bar

##### Power Options

- Engine gauge package\*
- AC generator packages (110V/60Hz - 220V/50Hz, 2200W)
- Cold Weather Packages
- Diesel scrubber/muffler (catalytic muffler, Tier 4i only)
- LPG tank 33.5 lbs (15.19 kg) capacity
- Intake air pre-cleaner (Tier 4i only)



# CHERRY PICKER • IE



Sales & Service



Bespoke Design



MEWP Training



Handling Solutions

