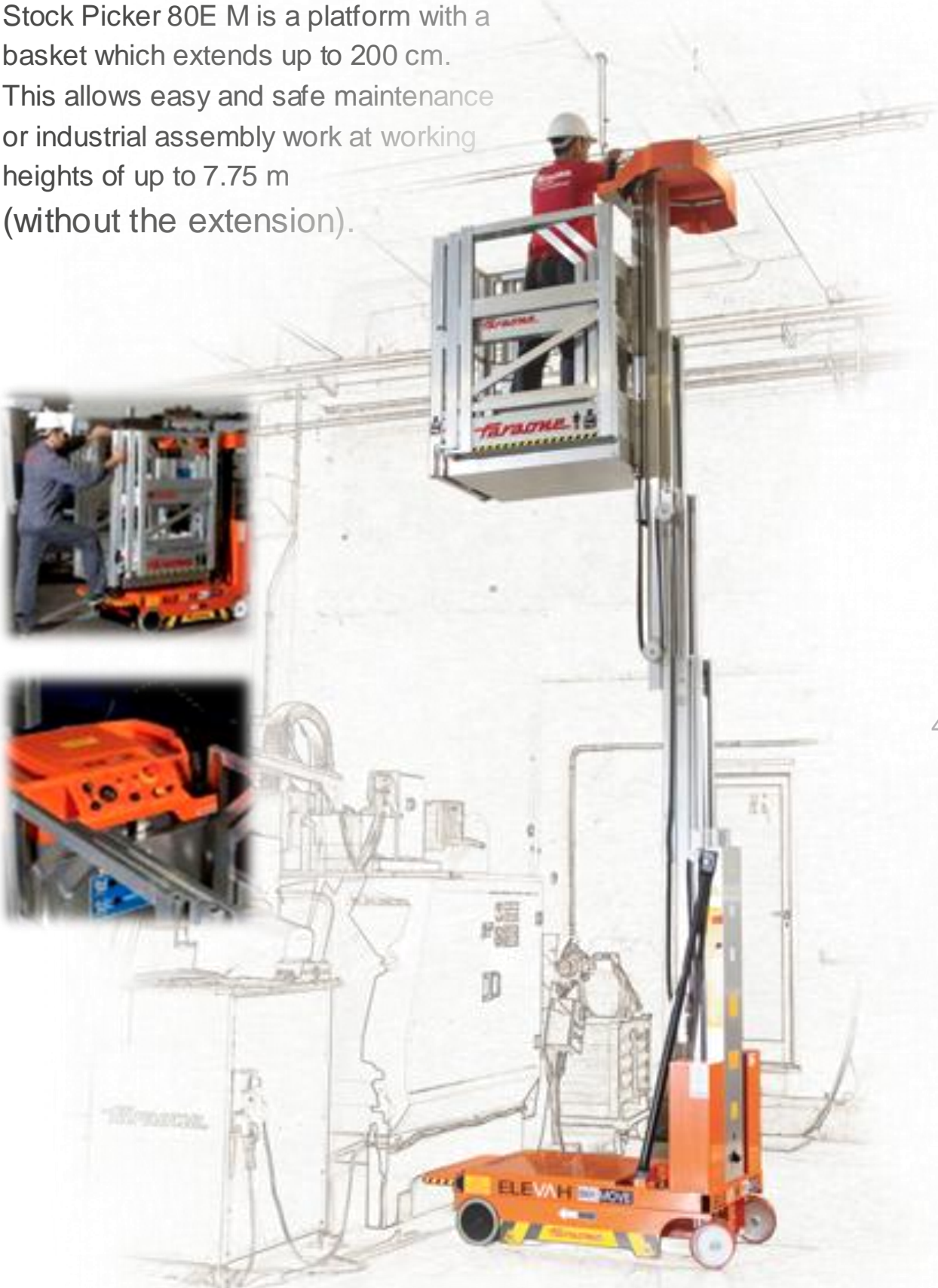




STOCK PICKER 80 E M

Stock Picker 80E M is a platform with a basket which extends up to 200 cm. This allows easy and safe maintenance or industrial assembly work at working heights of up to 7.75 m (without the extension).



EXTENSIBLE SELF PROPELLED PLATFORMS

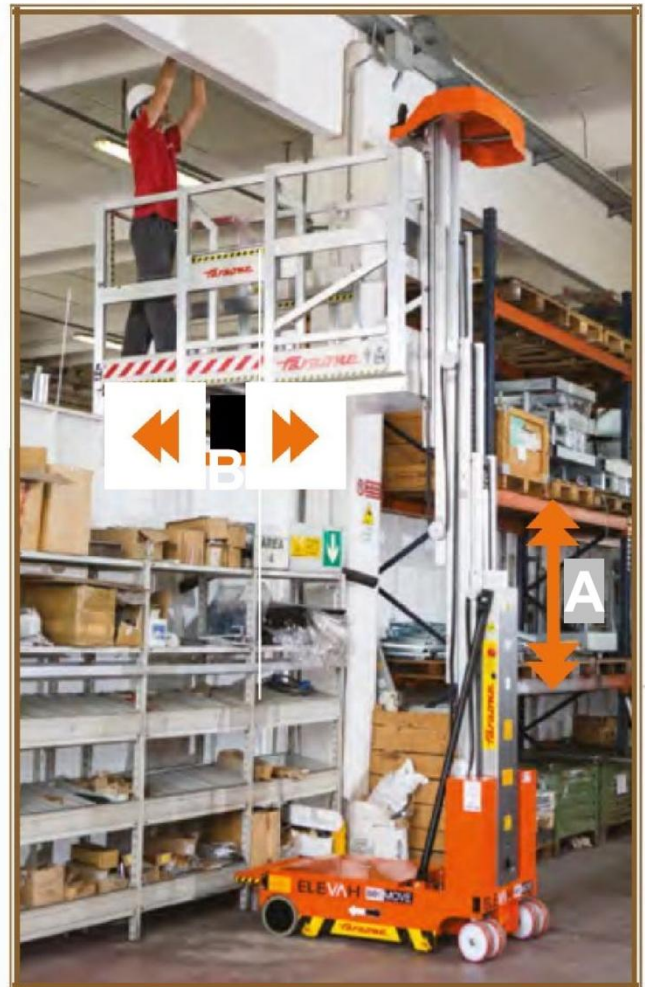


**COMPACT AND
EASY TO HANDLE.**

THE COLUMNS AND CAGE ARE OF ALUMINIUM

The compact size and the pivoting steering system give this machine an effective turning circle of zero.

EXTENSIONS		
	A	B
Max m	3	1,63
Max m	4	1,10



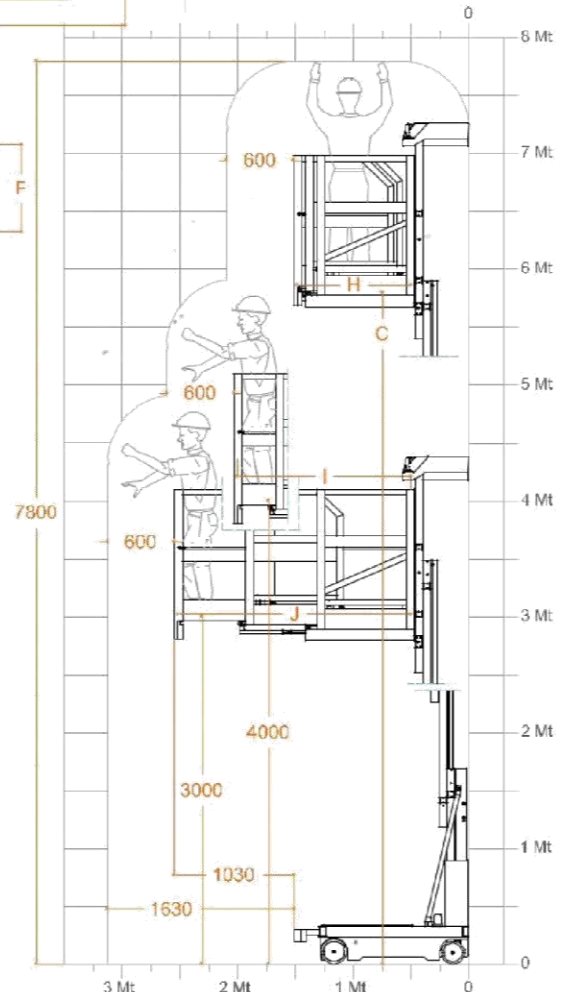
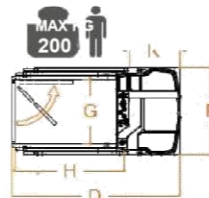
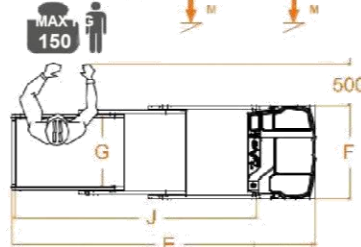
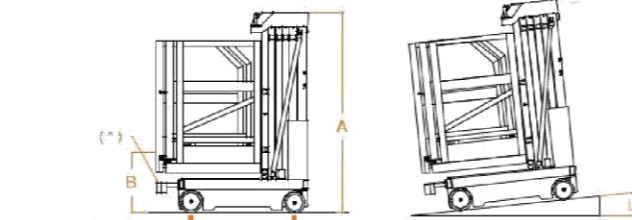
**SAFETY
FIRST**

- Automatic cage locking.
- Anti-tilting device.
- Electronic slope monitoring.
- Electronic braking system.
- Overload monitoring
- Emergency hydraulic lowering.

Technical data



Max capacity		200 kg
Number of people		1
Use		internal
A	Closed machine height	1990 mm
B	Min. height from the ground to the platform level	600 mm*
C	Max. height from the ground to the platform level	5750 mm
D	Base overall dimensions	1510 mm
E		2540 mm
F		780 mm
G		Cage inner dimensions
H		980 mm
I		1500 mm
J		2020 mm
K	Storage tray	450 mm
Capacity of storage tray		20 kg
Machine weight		1010 kg**
Power supply		24 V
N° 2 12V Pb Acid Batteries		105 Ah
Battery charger		110V - 220V
Climbing ability at height		2,5%
L	Maximum climbing ability	15%
Drive wheels dimension		Ø 220 x 65
Swivel wheels dimensions		Ø 200 x 50
Turning radius		1540 mm
Maximum rising speed		0,20 m/s
Maximum descending speed		0,20 m/s
Maximum shifting speed		0,70 m/s
Maximum shifting speed at height		0,25 m/s
Max. elevation of self-propulsion when raised		5750 mm
M	Maximum pressure for wheel at full load	4,40 kN***
Work cycles**** (with fresh batteries)		100



* There is an intermediate step.

*** Maximum pressure whereas the weight of the platform plus the maximum load on the basket are completely distributed on one side of the platform (totally asymmetric load).

**** By work cycle we mean a self-propelled movement of 20 m with a full ascent to and descent from the maximum height and with adjustment of the loading platform.

Distributed By